



Lake Mead

National Recreation Area

William K. Dickinson, Superintendent
April 2010



- First & largest national recreation area
- 5th most visited national park – visitation equal to Grand Canyon and Yosemite National Parks combined.

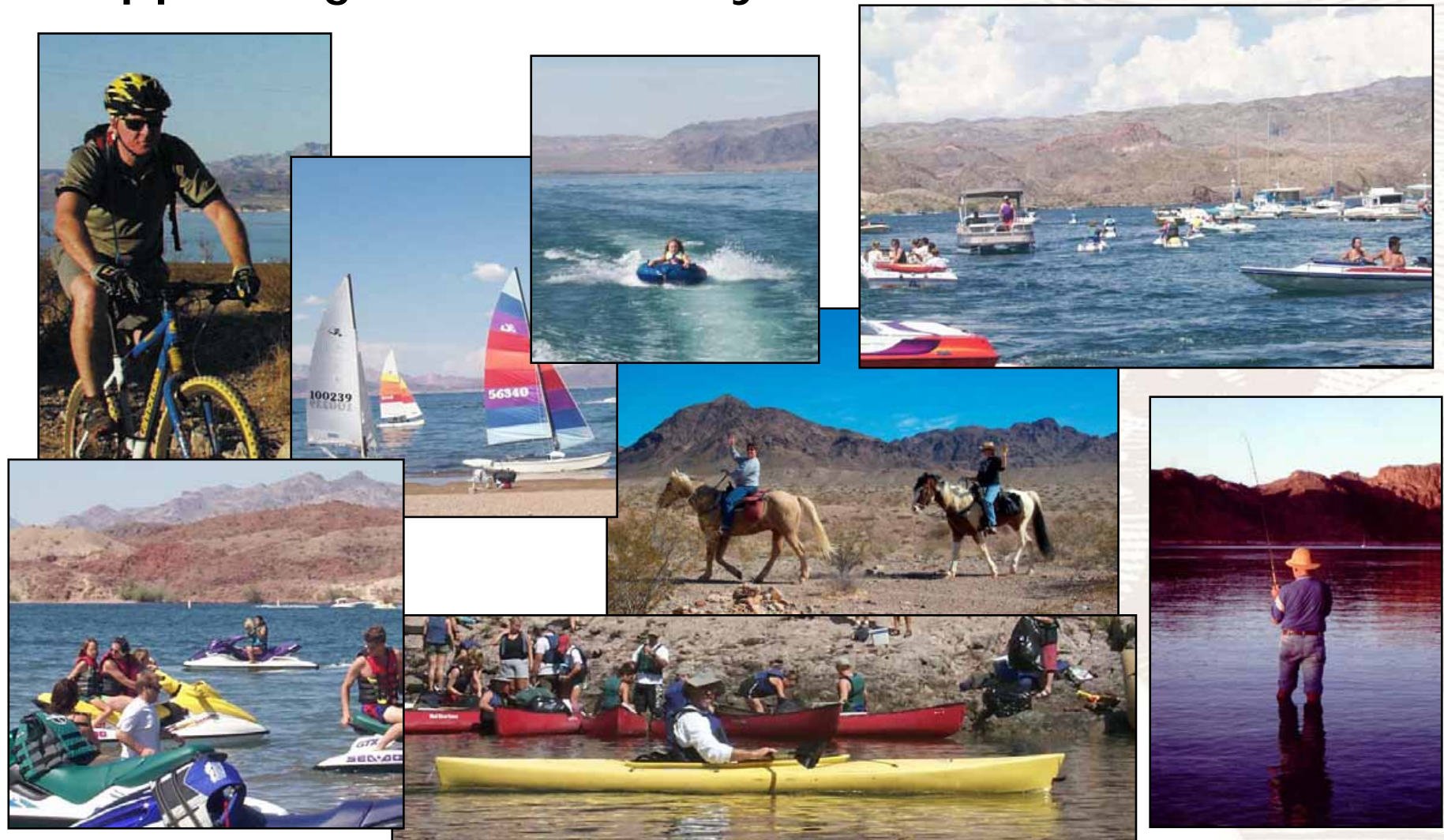


Significance

- 900 plant species
- 500 animal species
- Convergence of three of the four *North American Deserts*
- 25 threatened or endangered species
- Nine wilderness areas (185,000 acres)
- 1.8 million years of geological occurrences
- 10,000 years of human presence
- Nevada's first *Traditional Cultural Property*



Supporting a wide variety of active recreation



Lake Mead National Recreation Area

National Park Service
U.S. Department of the Interior



A half day's drive for 25-30 million people

Los Angeles

15 - 20 million population

Phoenix (Metropolitan Area)

3 million population

Salt Lake City

1 million population

Las Vegas

4,000-6,000 new residents/month

2 million population

40 million annual visitors





Lake Mead National Recreation Area

National Park Service
U.S. Department of the Interior





Annual visitation to Lake Mead NRA is 8 million

180,000-210,000 visitors over Memorial
Day weekend - more than 40% of the
NPS units visitation for an entire year



Who depends on the Park?



Lake Mead National Recreation Area

National Park Service
U.S. Department of the Interior



Economic Benefits

- 9 major business contracts
- \$45 million gross annually
- Fisheries - NDOW - \$97 million
- Lake Mead NRA contributes \$500 million to \$1 billion directly to the local and regional economy



Lake Mead NRA responsible for 7 small cities

- 8 water and wastewater systems
- 340 buildings (seven fire stations)
- 240 miles of paved roads
- 850 miles of gravel and dirt roads
- 7 campgrounds with 955 sites
- 7 major marinas
- \$1 billion in infrastructure

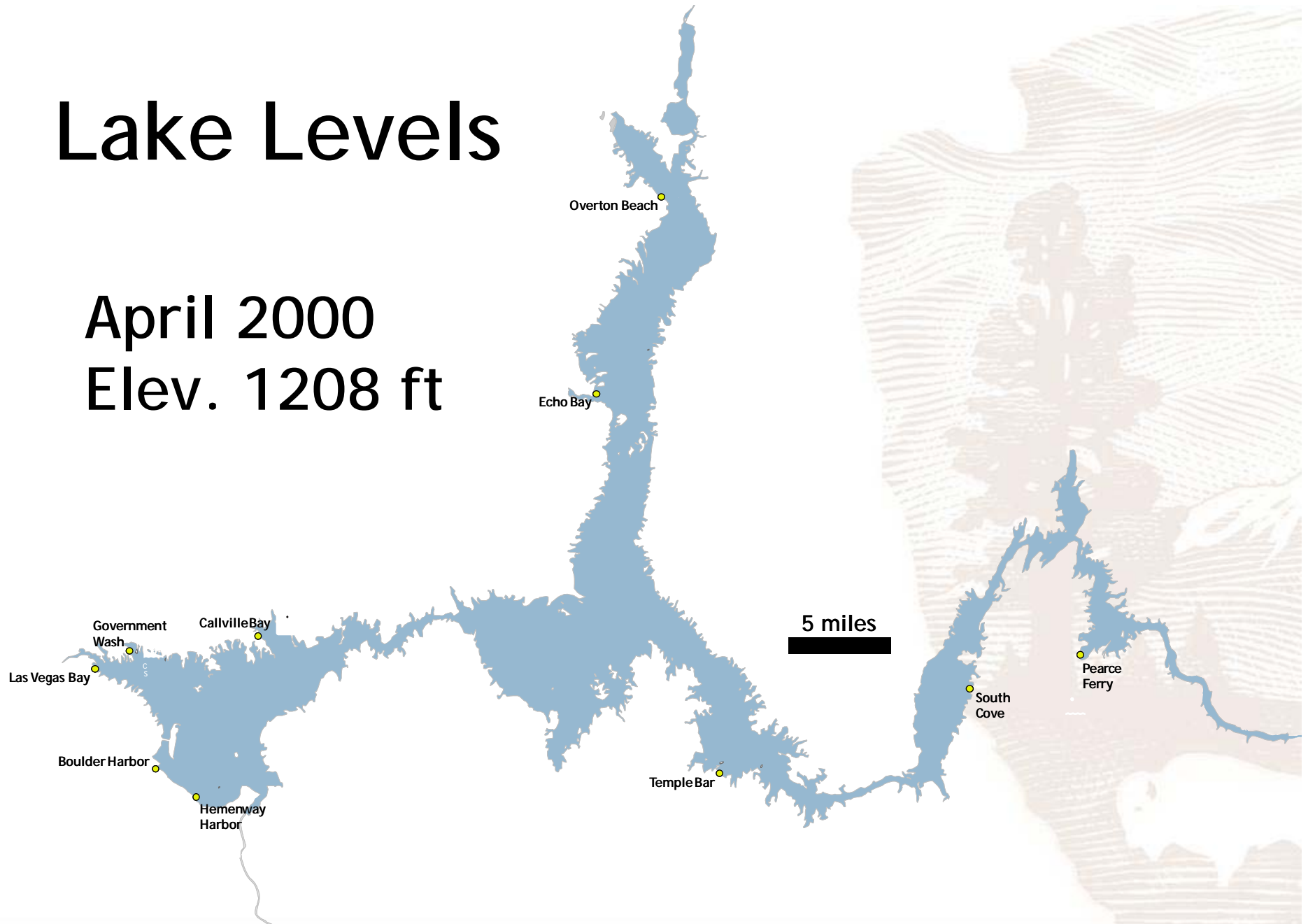


Lake Mead National Recreation Area



Lake Levels

April 2000
Elev. 1208 ft

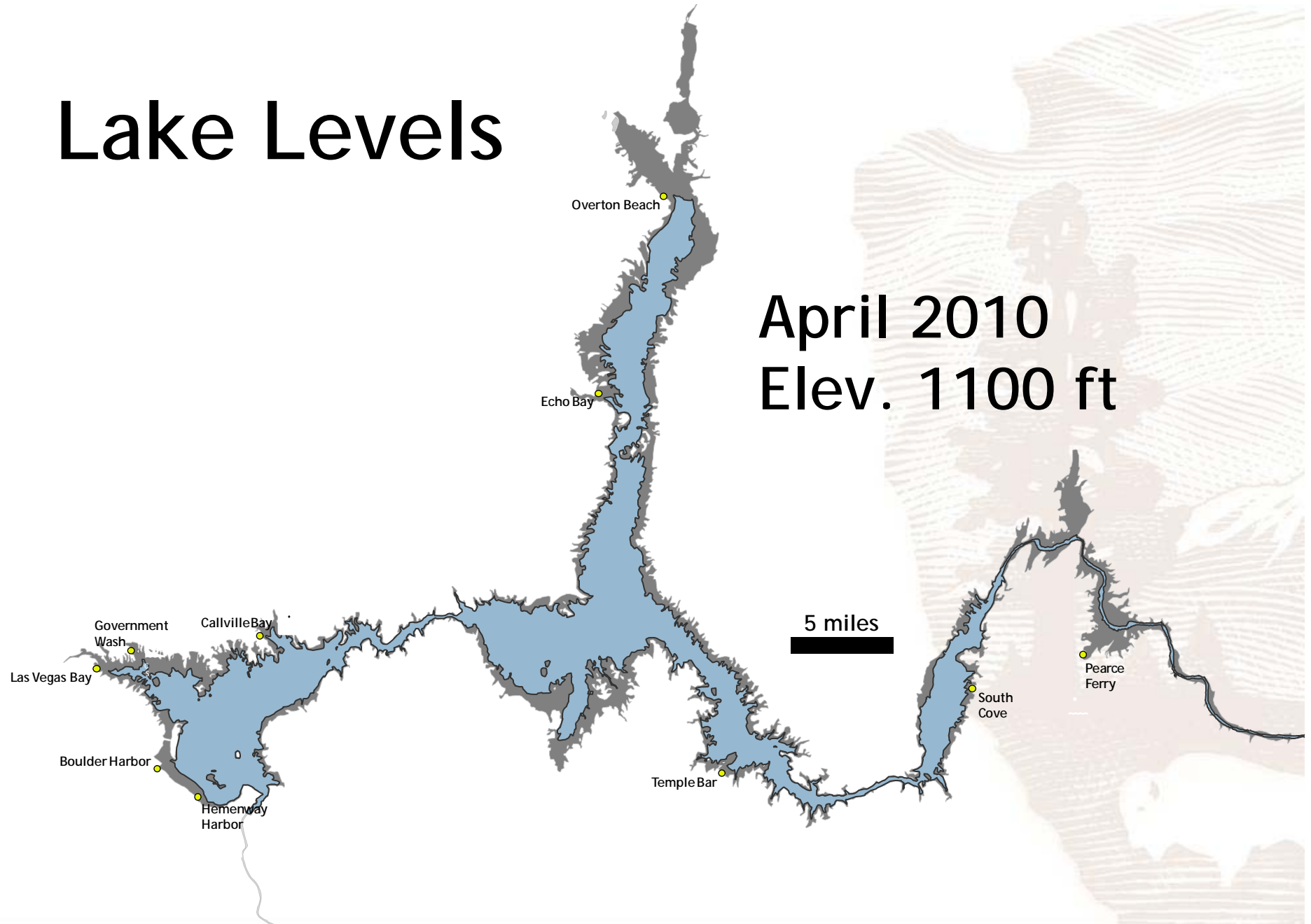


Lake Mead National Recreation Area

National Park Service
U.S. Department of the Interior



Lake Levels



Lake Mead National Recreation Area

National Park Service
U.S. Department of the Interior



Hemenway Launch Ramp

With each 20 foot drop the shoreline can move out 600 feet



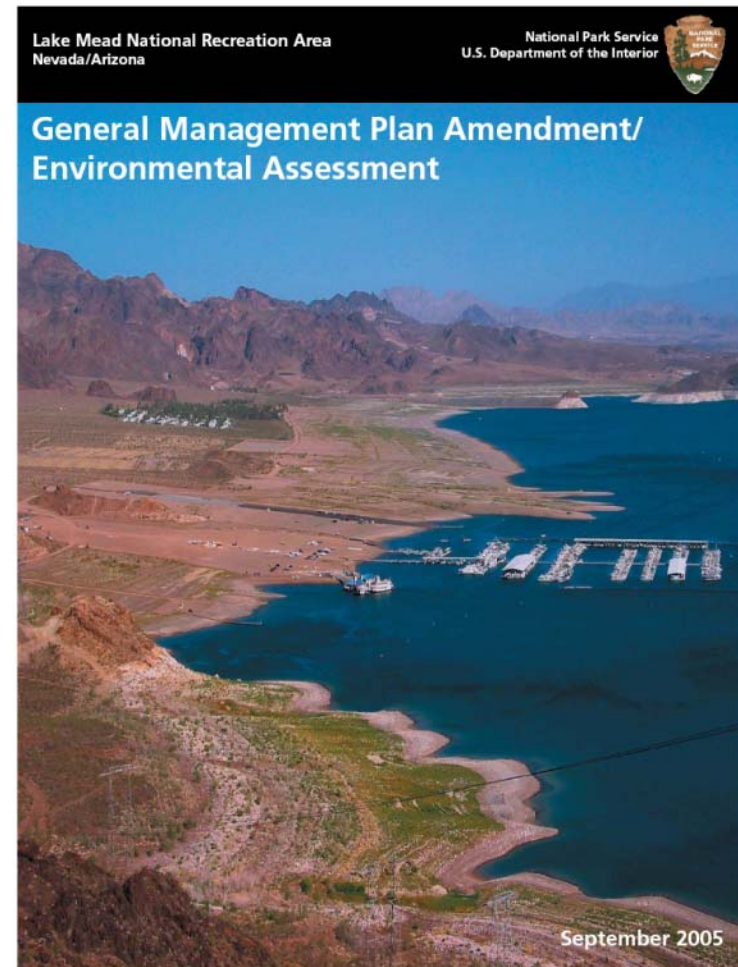
Lake Mead National Recreation Area

National Park Service
U.S. Department of the Interior



Low Water GMP Amendment

- Completed – Sept. 2005
- Identifies required steps and cost estimates associated with lowering lake levels.



Relocated / Closed Facilities to Date

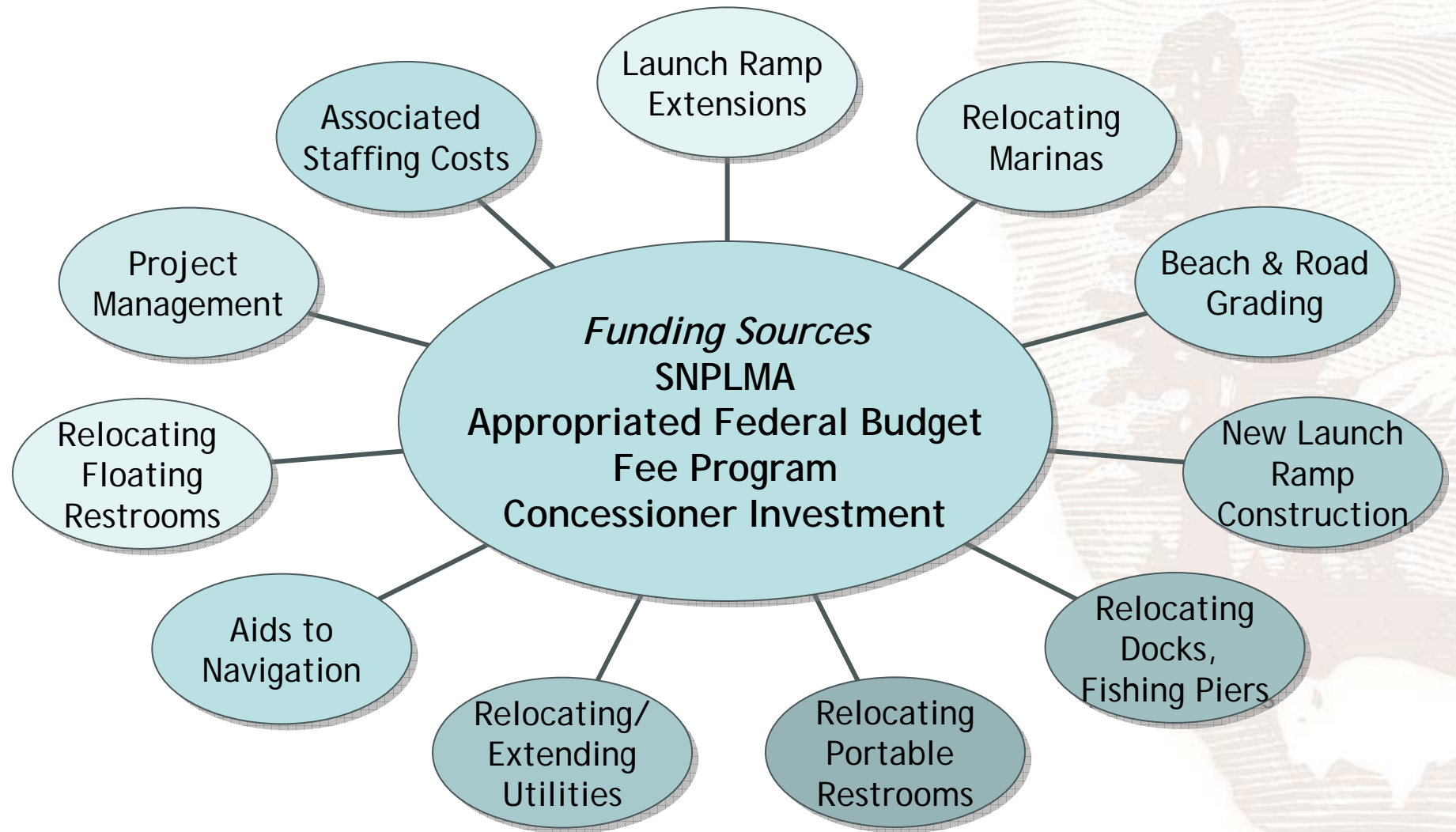


Lake Mead National Recreation Area

National Park Service
U.S. Department of the Interior



Response to Low Water





Portable/Skid Toilets



**Beach / Parking
Grading**



Aids to Navigation



Floating Sanitation Stations





Constructing / Grading Roads

Lake Mead National Recreation Area

National Park Service
U.S. Department of the Interior



Fishing Piers



Courtesy Docks

Lake Mead National Recreation Area

National Park Service
U.S. Department of the Interior





**Government
Dock**

**Water
Intake**





Utility Extensions & Upgrades



Callville Bay Launch Ramp



New Callville Bay Ramp



Road: 0.4 miles
Cost: \$2.3 million

Lake Mead National Recreation Area

National Park Service
U.S. Department of the Interior



Government Wash



Lake Mead National Recreation Area

National Park Service
U.S. Department of the Interior



Echo Bay



Lake Mead National Recreation Area

National Park Service
U.S. Department of the Interior



Temple Bar



Lake Mead National Recreation Area

National Park Service
U.S. Department of the Interior



Las Vegas Bay



Lake Mead Nation

Boulder Harbor



Lake Mead National Recreation Area

National Park Service
U.S. Department of the Interior



LV Boat Harbor/Lake Mead Marina - Lake Mead Cruises



Overton Marina Moves



Lake Mead National Recreation Area

National Park Service
U.S. Department of the Interior



South Cove Launch Ramp

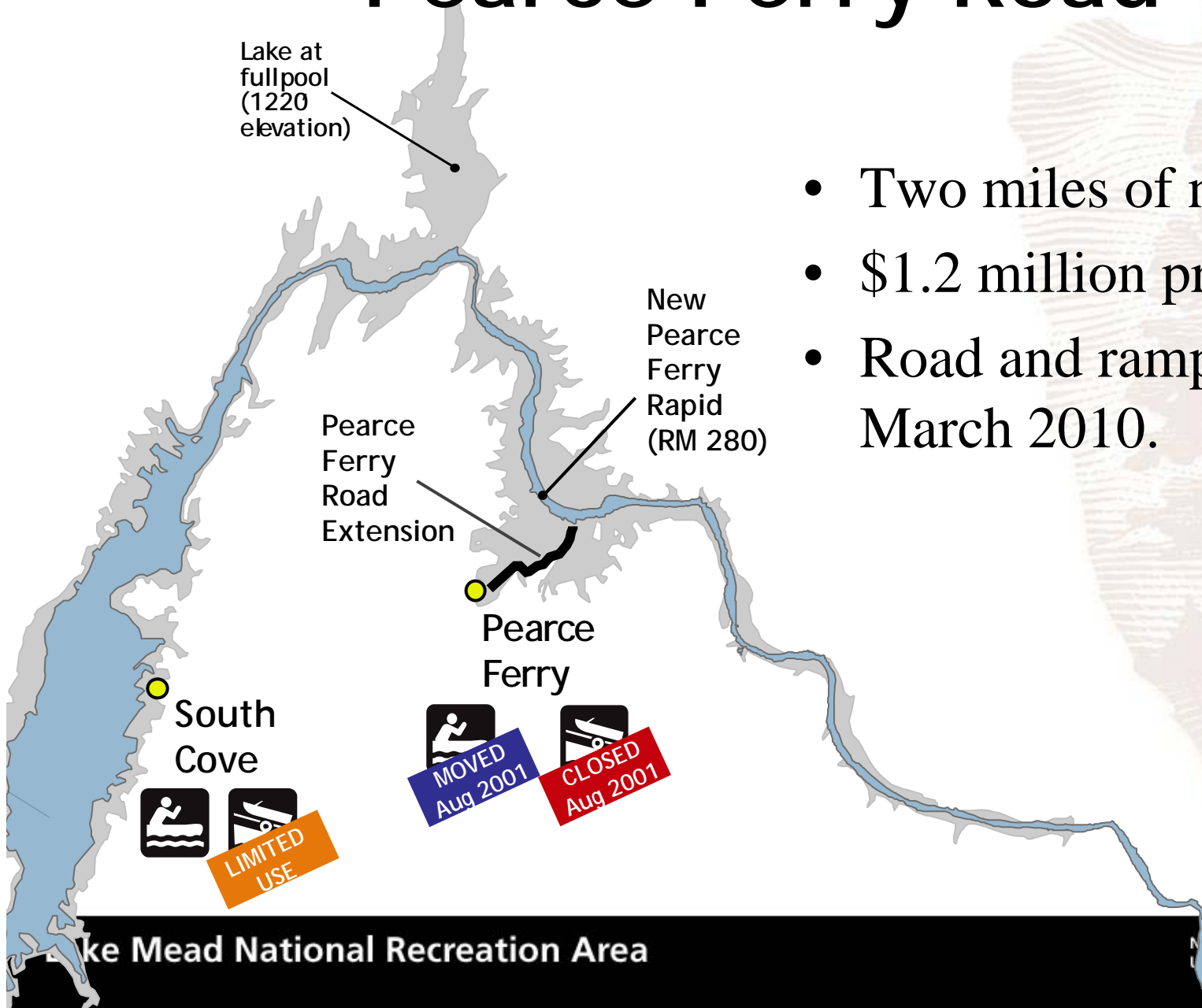


Lake Mead National Recreation Area

National Park Service
U.S. Department of the Interior



Pearce Ferry Road



- Two miles of new road
- \$1.2 million project
- Road and ramp opened March 2010.

Lake Mead National Recreation Area

National Park Service
U.S. Department of the Interior



Pearce Ferry Road



Pearce Rapid

Lake Mead National Recreation Area

National Park Service
U.S. Department of the Interior



Pearce Ferry Take Out

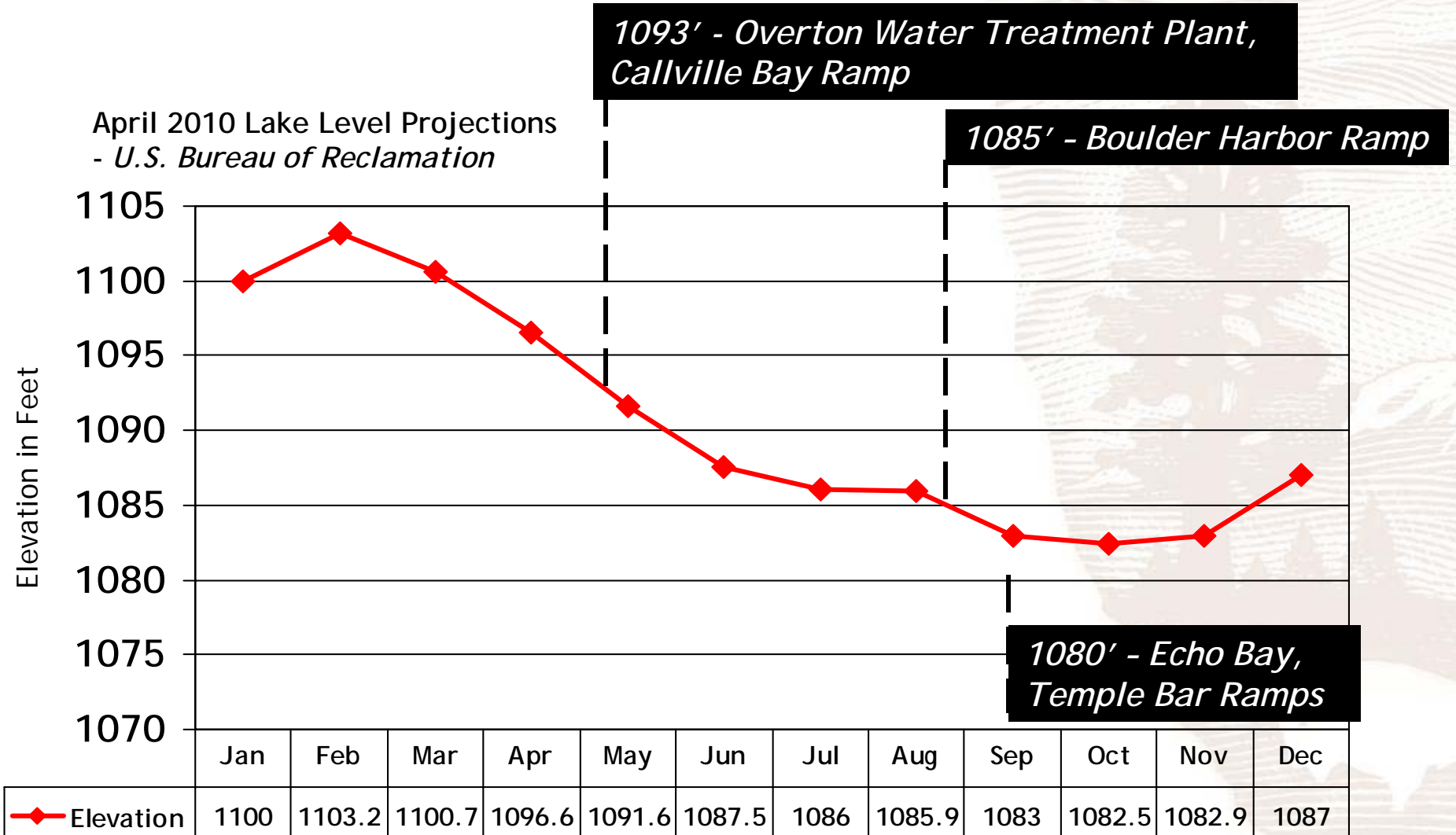


Lake Mead National Recreation Area

National Park Service
U.S. Department of the Interior



Critical Elevations - 2010



Major Summer 2010 Issues

Overton Beach



Echo Bay



Lake Mead National Recreation Area

Lake Wide

- Maintain lake access, relocate critical visitor services and aids to navigation.

Overton Beach

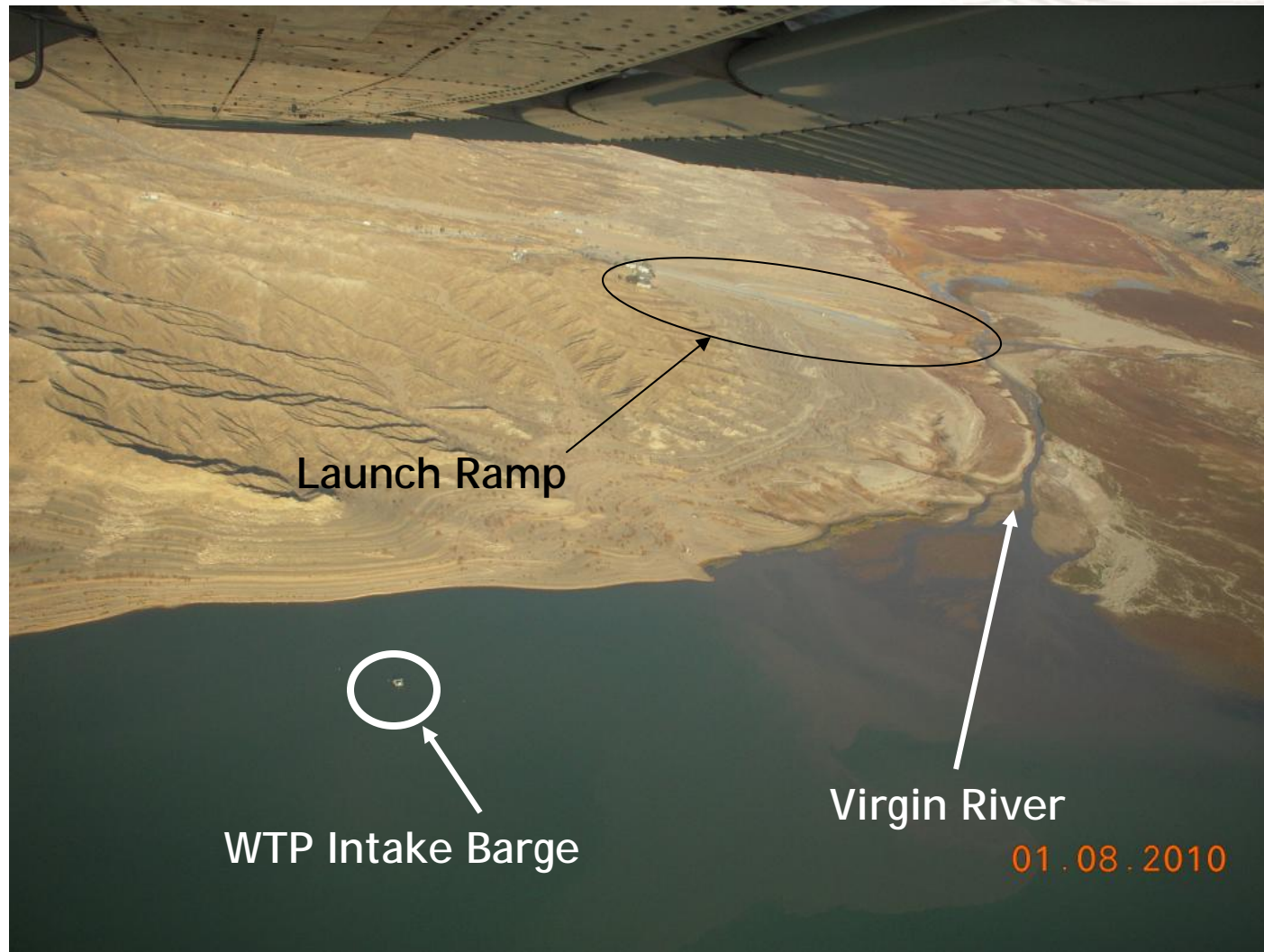
- Water Treatment Facility

Echo Bay

- New Low Water Launch Ramp
- Relocation & Reconfiguration of Marina



Overton Beach Jan 2010



Overton Beach Water Treatment Plant/ Temporary Road Closure

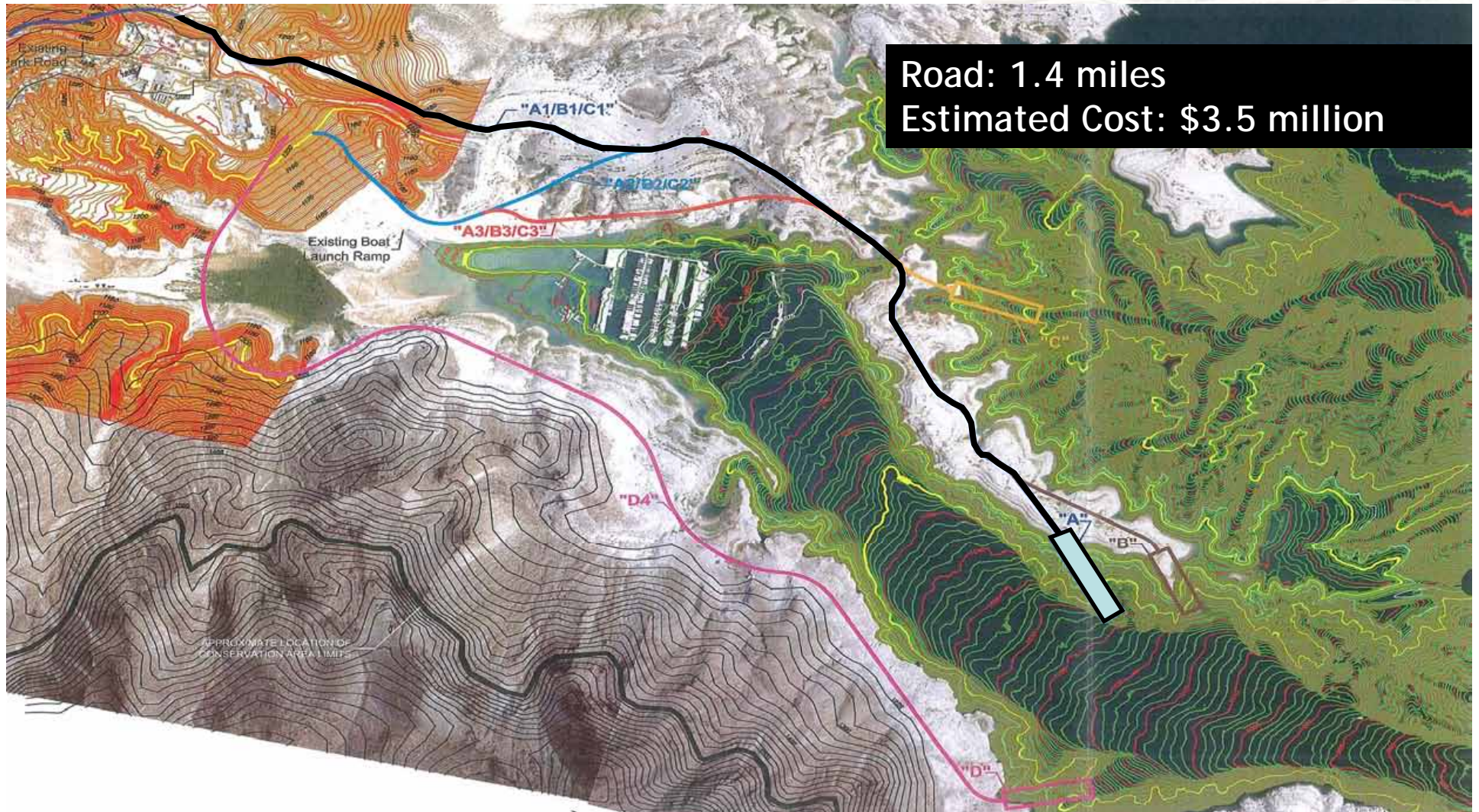
- **Mothball Plant and shut down all utility services as of Apr. 25**
- Services dependent on water treatment plant
 - Fish Cleaner
 - Park Housing
 - RV Dump Station
 - Fire Suppression
 - Irrigation
- **\$35,000 - \$45,000 to mothball plant**
- Temporary road closure. Limited public access.
- Bring back online and restore services as soon as conditions allow. **Future startup costs (approx. \$55,000 today's est.)**



Echo Bay Launch Ramp Existing Conditions



Echo Bay Launch Ramp New Alternative Sites



Lake Mead National Recreation Area

National Park Service
U.S. Department of the Interior



Operational Impacts 2010

- NPS - **\$4-6 million** (avg. \$6 million per 20 ft drop) for operations plus cost of constructing a new road and ramp at Pearce Bay (\$1.2 million) and a new low water ramp at Echo Bay (est. \$3.5 million).
- Concessioners – Over estimated **\$1.6 million** combined
 - Echo Bay \$375,000
 - Las Vegas Boat Harbor \$250,000-\$360,000
 - Lake Mead Cruises \$120,000
 - Temple Bar \$300,000
 - Callville Bay \$600,000



Messaging



Lake Mead National Recreation Area

National Park Service
U.S. Department of the Interior



Colorado River Parks

- **Arches National Park**
- **Black Canyon National Park**
- **Canyonlands National Park**
- **Curecanti National Recreation Area**
- **Dinosaur National Monument**
- **Glen Canyon National Recreation Area**
- **Grand Canyon National Park**
- **Lake Mead National Recreation Area**
- **Rainbow Bridge National Monument**
- **Rocky Mountain National Park**



Colorado River Parks

- **Most preserved**
major river corridor in the world

- **1,130 river miles** within
national parks and Monuments

- **Direct recreational value**
\$6 billion per year

- **39 percent** of the Colorado River
and main tributaries (2,930 miles)

- **Ecological/cultural connection** between
the parks and the people

Lake Mead National Recreation Area

National Park Service
U.S. Department of the Interior



Recreation

- Quality of life
- Economic benefits
- Expect more frequent and more dramatic lake level fluctuations
- Greater consideration of impacts on recreational use and tourism industry in decision process is needed
- Storage adjustments as small as one foot in elevation during the summer can make a difference in recreational access.
- Recreational benefits can be realized without impacts on consumptive use, power production





Lake Mead National Recreation Area

National Park Service
U.S. Department of the Interior

