

# RECLAMATION

*Managing Water in the West*

## Perspectives on the Colorado River Basin

**Terry Fulp**

**Deputy Regional Director**

**Bureau of Reclamation, Lower Colorado Region**

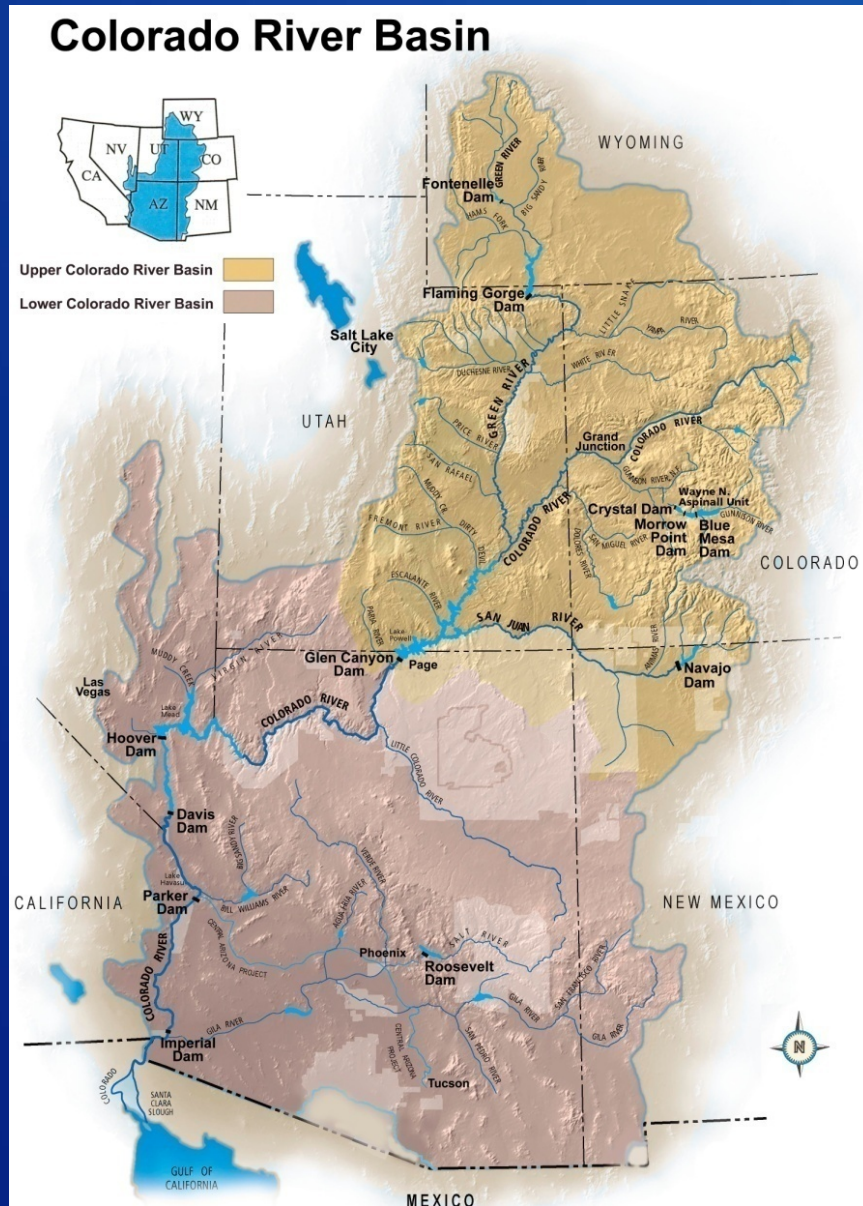
**Colorado River Commission of Nevada Symposium**

**April 21, 2010**



**U.S. Department of the Interior  
Bureau of Reclamation**

# Colorado River Basin



Above are members of the Colorado River Commission. Left to right: Delph Carpenter, Colorado; W.S. Norviel, Arizona; Clarence Stetson, executive secretary of the commission; Herbert Hoover, US Secretary of Commerce; James Scrugham, Nevada; R.E. Caldwell, Utah; W.F. McClure, CA; Stephen B. Davis, Jr., NM; and Frank C. Emerson, Wyoming.



# RECLAMATION

# Colorado River Basin Storage

(as of April 18, 2010)

Current Storage	Percent Full	MAF	Elevation (Feet)
Lake Powell	56%	13.63	3,619
Lake Mead	44%	11.42	1,099
Total System Storage*	55%	32.60	NA

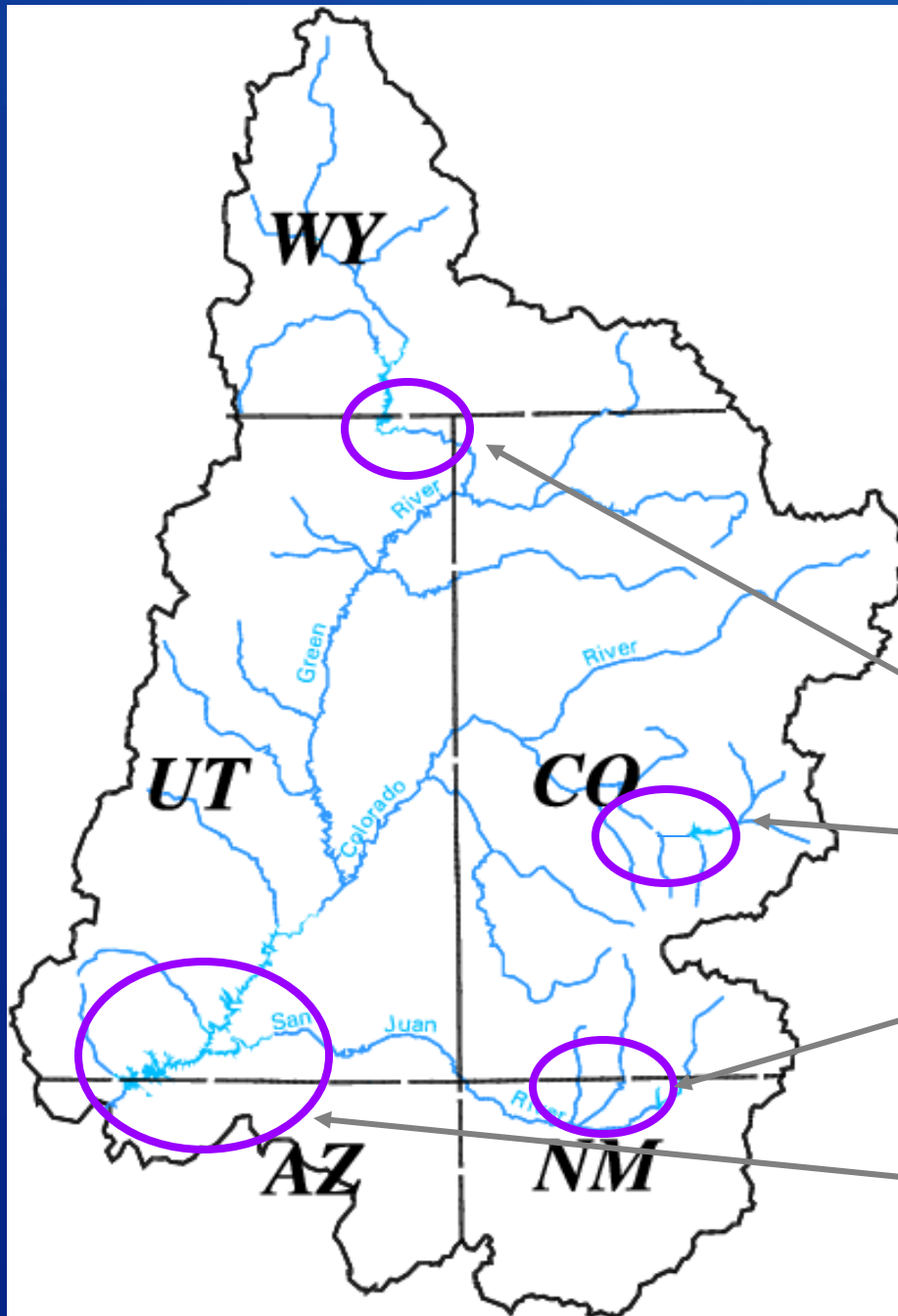
\*Total system storage was 31.88 maf or 54% this time last year

RECLAMATION



# 2010 Upper Colorado Projected Apr–Jul Inflow

as of April 15, 2010



Flaming Gorge – 45%

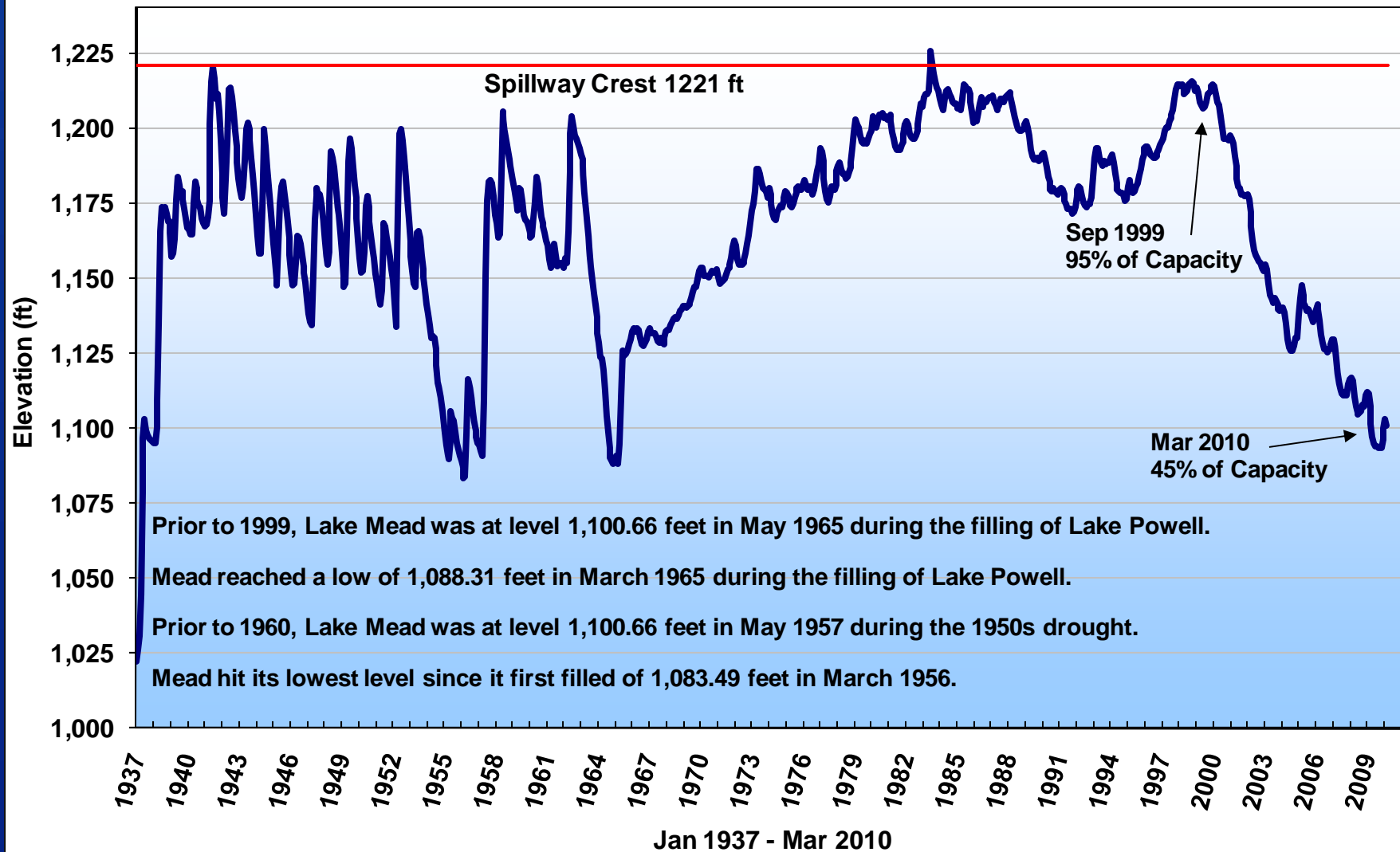
Blue Mesa – 74%

Navajo – 81%

Lake Powell – 66%

## RECLAMATION

## Lake Mead End of Month Elevation



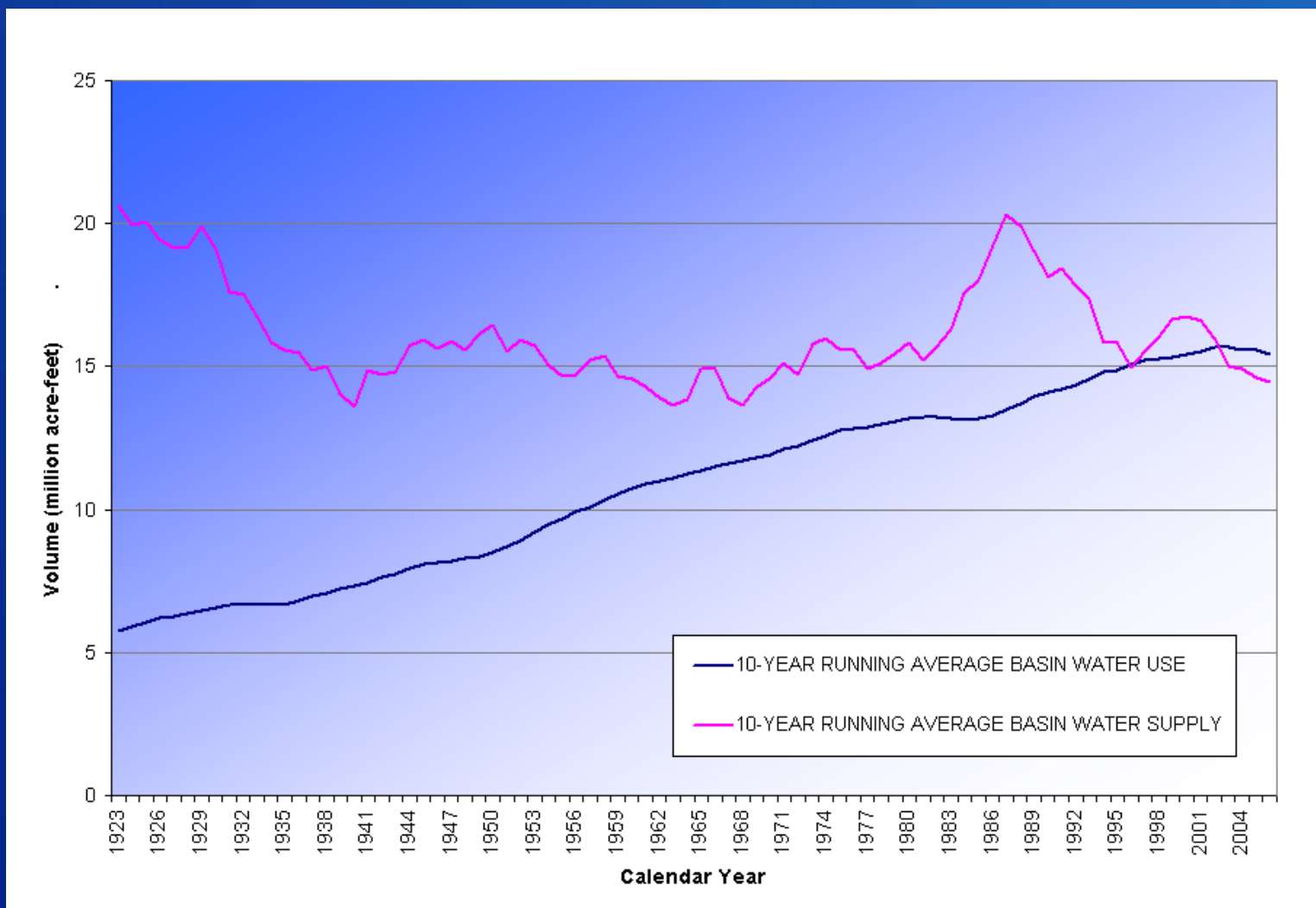
# RECLAMATION

# 2007 Interim Guidelines



RECLAMATION

# Colorado River Water Supply & Demand



RECLAMATION



# Colorado River Basin Water Supply and Demand Study

- Two-year, \$2 million study cost shared by Reclamation and the Basin States
- A transparent, collaborative study with input from all stakeholders
- Email:  
[ColoradoRiverBasinStudy@usbr.gov](mailto:ColoradoRiverBasinStudy@usbr.gov)
- Website:  
<http://www.usbr.gov/lc/region/programs/crbstudy.html>

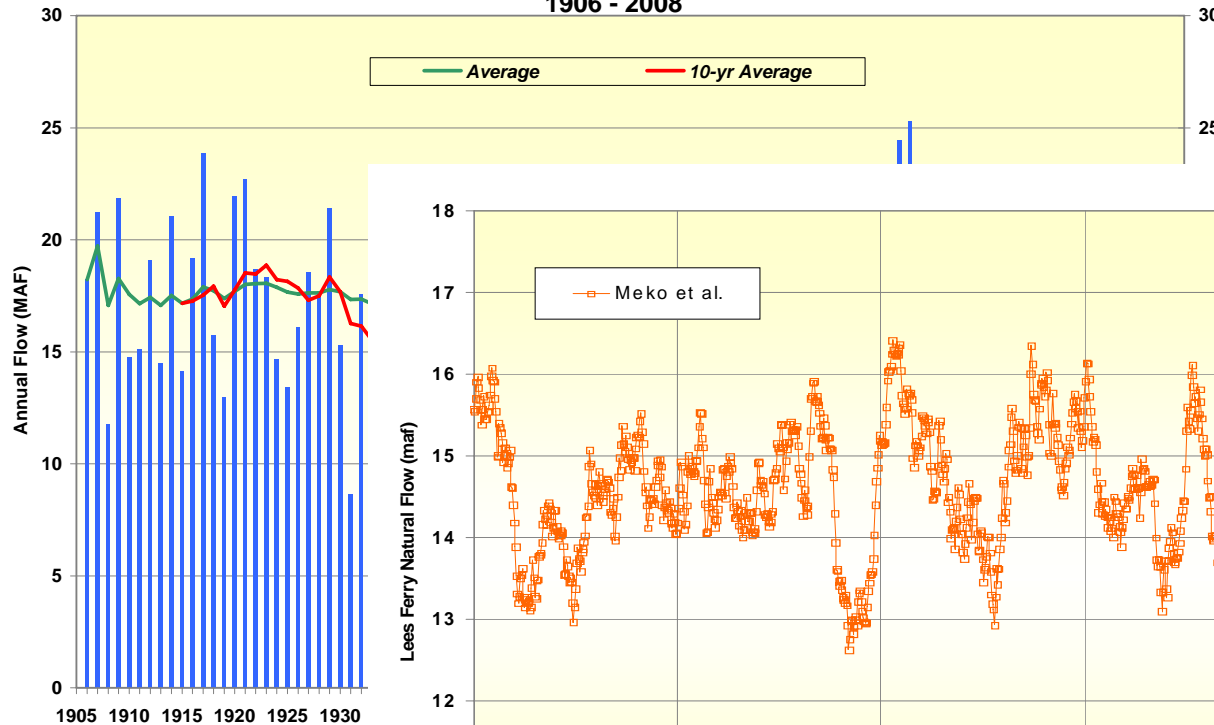


RECLAMATION

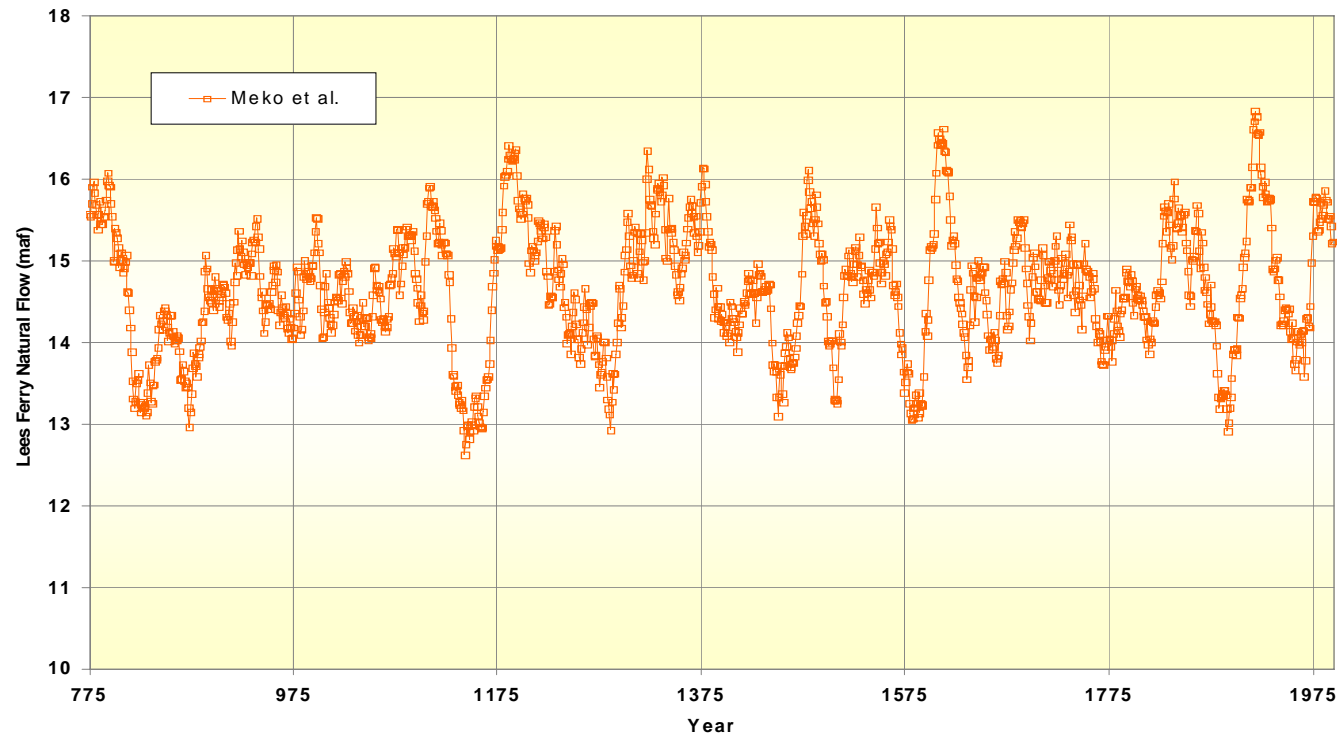


# Colorado River Water Supply & Demand

Natural Flow at Lees Ferry, AZ  
1906 - 2008

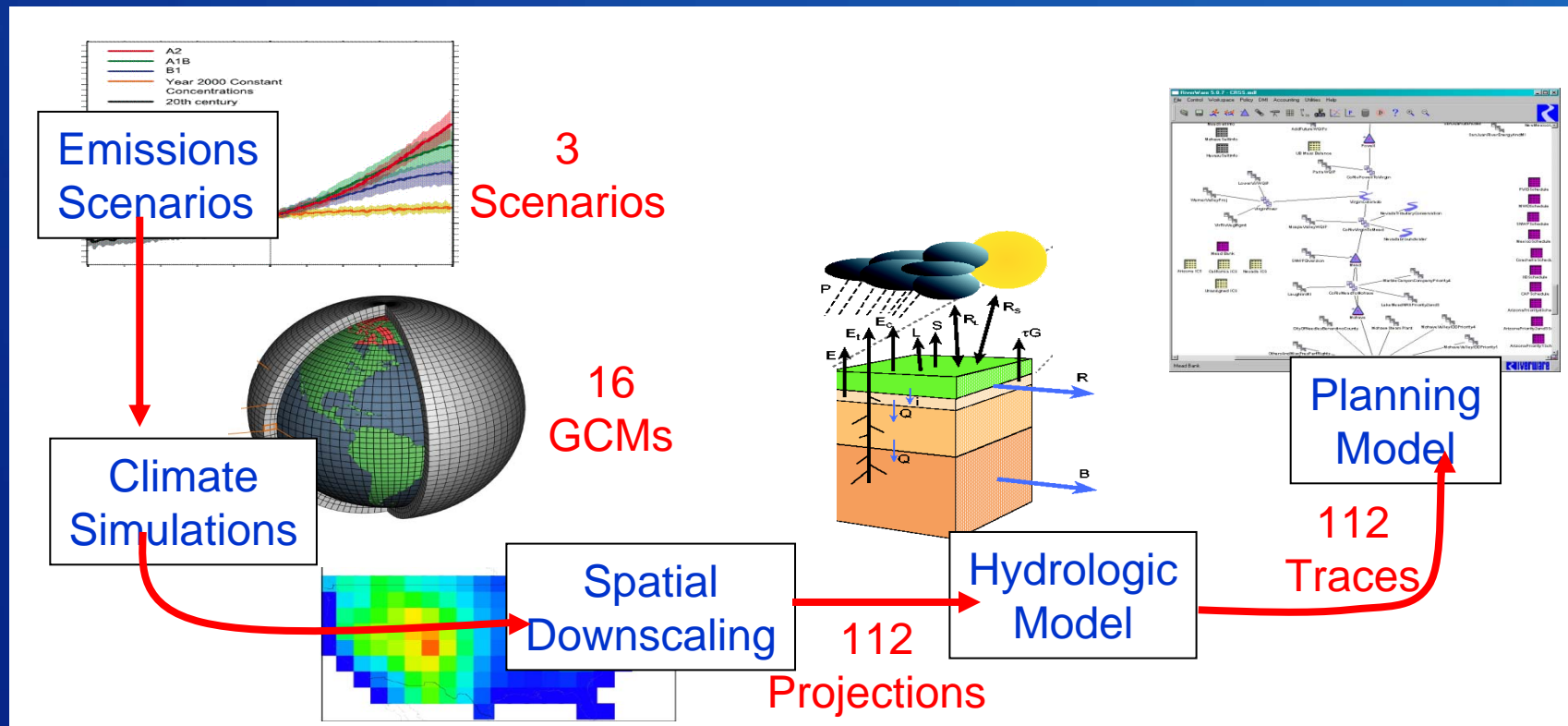


Provisional data, subject to change



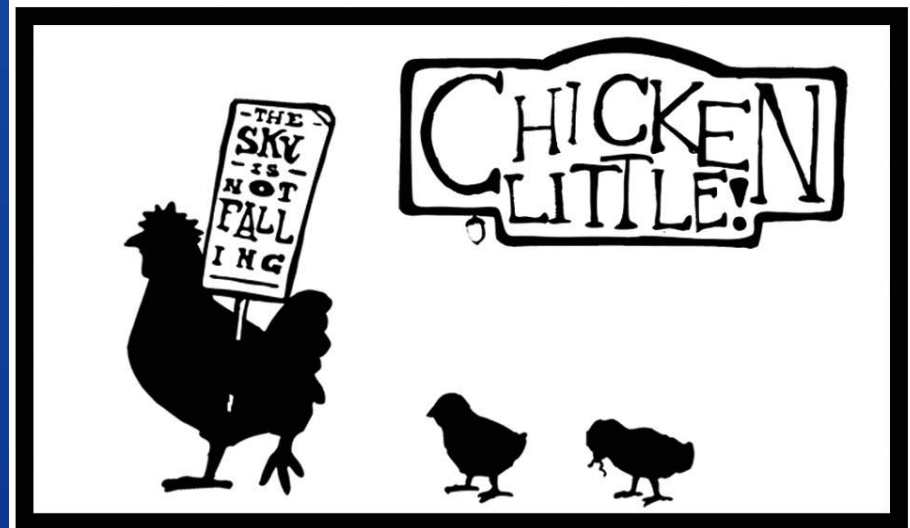
RECLAMATION

# Methodology to Incorporate Climate Change Information into Water Supply Projections



RECLAMATION

# Perspectives on the Colorado River Basin



## RECLAMATION